

# ASISHI

---

**Average Height:**

**Females -**

**1.67 valen**

**20.63 meters**

**67.68 feet**

**Males -**

**1.54 valen**

**19.00 meters**

**62.35 ft**

**Average Lifespan:**

**129 years**

**Average Weight:**

**Females -**

**70.833 kilofaarir**

**132.77 metric tons**

**146.35 tons**

**Males -**

**54.113 kilofaarir**

**101.43 metric tons**

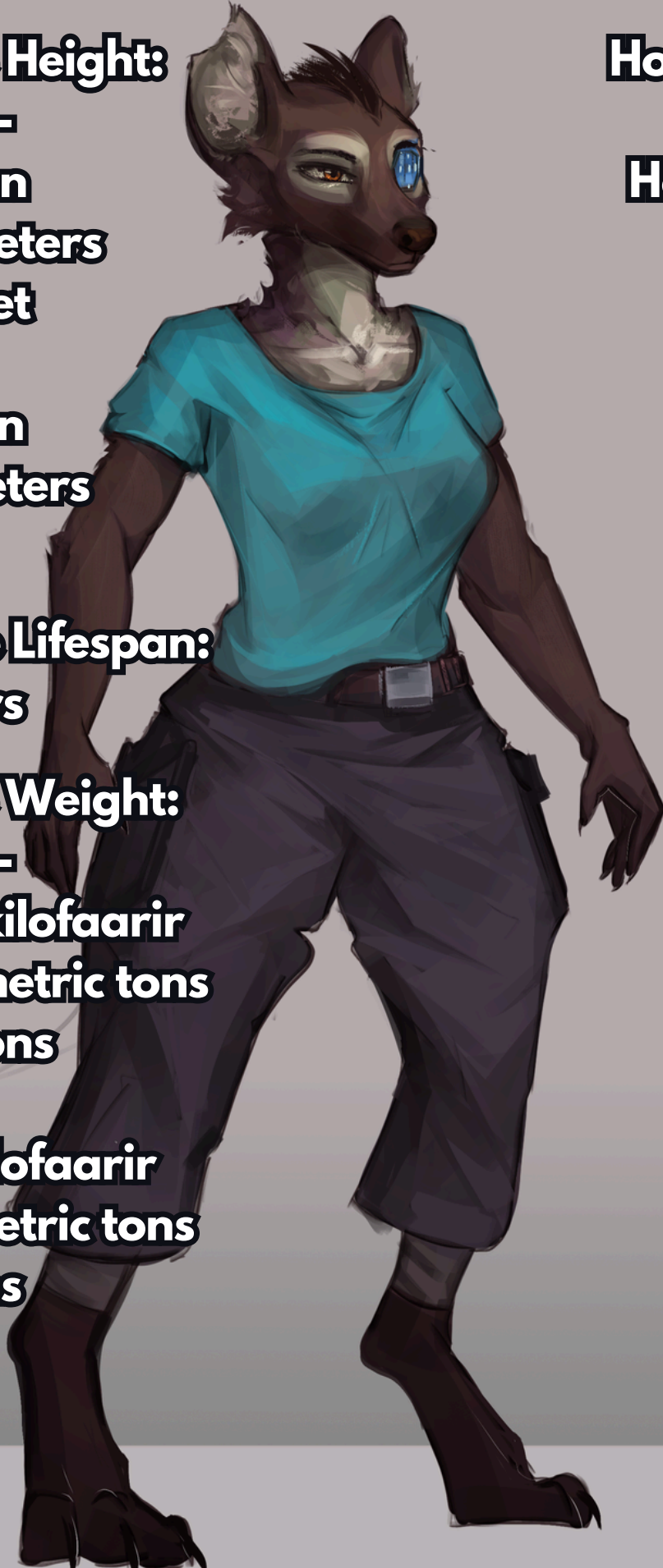
**111.81 tons**

**Home System:**

**Ek'lishka**

**Homeworld:**

**Lishka**

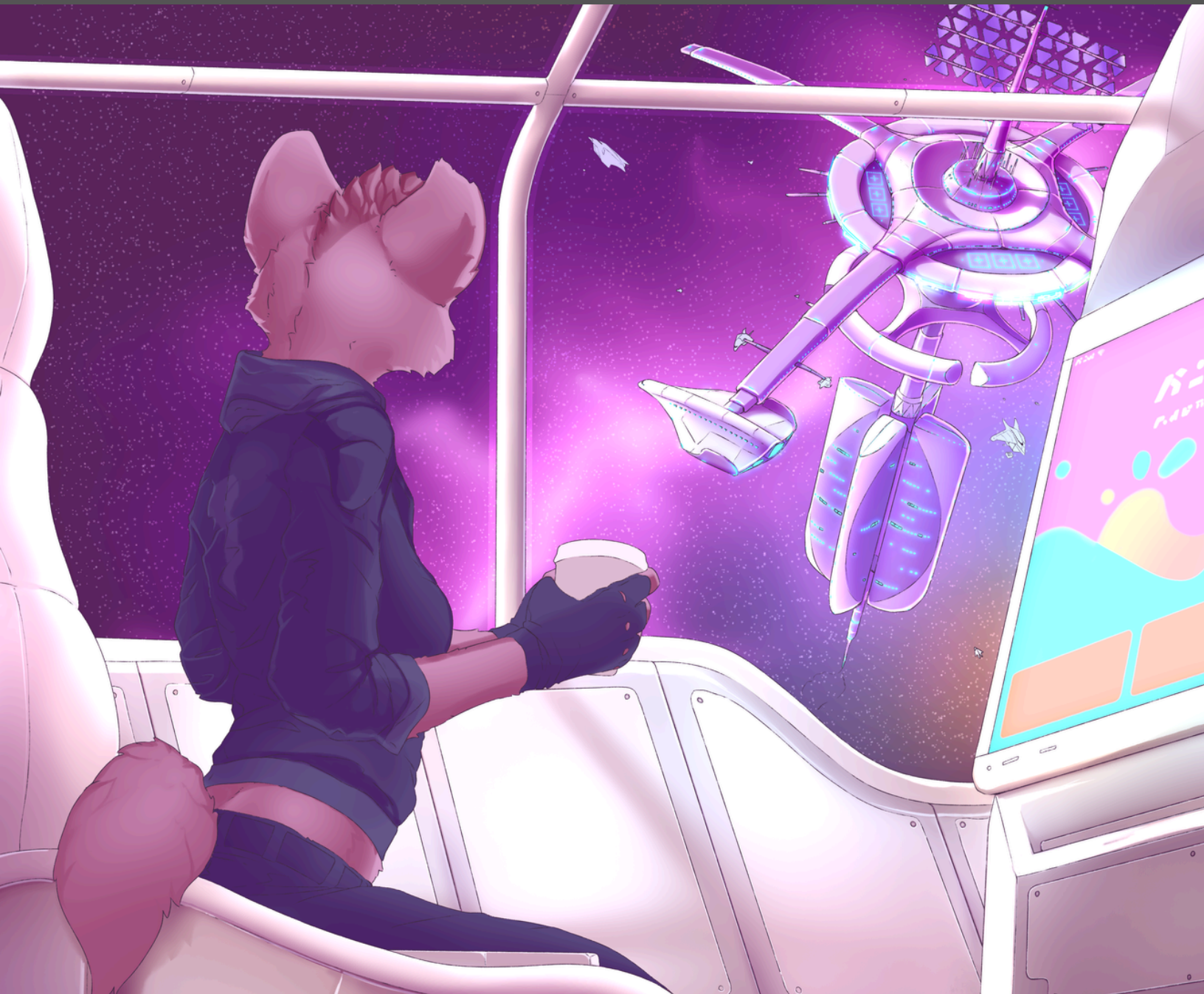


# ASISHI INFO

---

## APPEARANCE:

The asishi are a mammalian species that closely resemble the striped and spotted hyena species found on Earth. A smaller proportion of the population, approximately four percent, more closely resemble aardwolves. Their fur is typically relatively monochromatic, with the base colors ranging from brown or yellow gray to flat gray and charcoal dark. Their spots, stripes, or other defining features are most often black, but a faded red is relatively common. The fronts of their torsos are typically a lighter shade than their primary color, and lack spots or stripes. Their eyes are normally brown, green, amber or gold, but blue is a rare possibility.



# ASISHI INFO

---

## PHYSICAL TRAITS:

One of the most blatant physical aspects of the asishi is a rather significant case of sexual dimorphism. Their females are on average about three meters taller than the males and noticeably stronger in build. Otherwise, they look much the same, barring typical secondary sex characteristics.

The species has excellent endurance, third to the neishor. They have the usual claws on each digit, but their jaws are known for being especially powerful. In a fight, the asishi can be exceptionally vicious due to regular use of their mouths, to the point of actually devouring torn-off parts of their foes. Asishi who resemble aardwolves have slimmer, weaker jaws, in favor of long, sticky tongues. Their penchant for eating insects is not shared with other asishi.

## SENSES:

Their senses are standard fare for predator species, with strong olfactory senses and sensitive hearing. Their eyesight is well evolved, though not exceptionally keen. Despite their great sense of smell, asishi do not get offended by foul odors as easily as other species. They even enjoy scents that would make other species feel ill upon exposure.

## REPRODUCTION:

The gestation period for asishi is approximately five months long and typically only yields a single cub, though as many as three can be born with minimal health difficulties for the mother. Males and females are the only naturally healthy gender, however the usual genetic therapy permits healthy hermaphrodites.



**Ahgyak would introduce herself, but she's too busy drinking grown-up juice!**



# ASISHI INFO

---

## PSYCHOLOGY:

An aspect that has long since been accepted as total instinct for the asishi is their matriarchy. Males simply submit to the females, and it's merely a fact of their existence. However, this only happens within their species. Women rarely have a desire to express dominance over males from other species, and male asishi often become aggressive when women from another species attempt to dominate them. Although there's very rare exceptions, this mentality where asishi males submit to asishi women is more instinctual and biological rather than purely cultural, so these same instincts might not apply to non-asishi.

The asishi matriarchy has created a curious dynamic in their modern society. Their males are capable of leading the other genders quite well, as the asishi do not allow gender to blind them to a good leader. However, if that leader tries to aggressively control the other genders, then he is likely to be violently usurped. This has led to the odd phenomena of male asishi in leadership positions being exceptionally pleasant to work with, despite the species as a whole being known for aggression. During their integration, the military planned training for each gender to accept authority by rank rather than their gender. However, this proved to be unneeded. Against all perceived odds, the asishi policed their gender imbalance admirably.

However, despite this somehow functional matriarchy, the species is well known for their violent natures. Their aggression is comparable to the rynar and sissach, but not so easily predictable. Asishi entering integrated society have to go through courses meant to instruct them on how to control their tempers, and how to react without overwhelmingly violent force when those tempers are lost. Many asishi pass these without much issue. However, some require more instruction, and others never seem capable of qualifying for prolonged visits with other species.

Examples of asishi aggression include immediately trying to draw blood in a fight, pursuing military reaction to civil unrest, conservative capture of prisoners, and devouring the corpses of their enemies. Against all odds, these issues are not a major problem in the UAF due to thorough screening and training, but they're still prevalent among independent asishi forces.

It's often wondered how the asishi are so capable of being aggressive among their own kind, yet so adaptable and cordial when working with aliens altogether.

# ASISHI HISTORY

---

The asishi were actually discovered before the viliti, though at the time they were engaged in a violent civil war spanning multiple systems. While the ashar were still separated from the UTO, an ishentian exploration vessel wandered into a system that was still littered with the debris of a fresh battle. The ship was disabled through weapons fire and promptly boarded, costing two ashar their lives.

Upon discovering the vessel was alien in origin, the asishi forces decided to simply capture its crew rather than destroy them. After working through a language barrier over the next few weeks, the asishi allowed the ishentians to send a message home, requesting help. After a small ishentian fleet arrived, the asishi released the captives and the deceased. They immediately closed diplomatic talks, merely providing star charts of current asishi territories and any contested systems, then requested for the ishentians and the 'UTO' they spoke of to stay out until the conflict was resolved.

It took four years, but the civil war eventually ended. Asishi then opened diplomatic channels with the UTO, the Rynar Collective, and the Ishentians. The UTO only took a single quarter to decide the asishi were too violently unpredictable to be a member species, having settled for trade agreements and cultural exchanges at most. The asishi demonstrated an immediate understanding of the rynar, and both factions promptly began threatening each other, but they only had a few minor conflicts to sort out their territorial disputes. Interestingly, the asishi and ishentians got along extremely well, despite an initial hostile first contact incident with ishentian explorers. The asishi have very blunt mannerisms and perspectives, which fit well with ishentian honesty, baffling UTO diplomats who struggled to work with them.

The asishi went on for 231 years with only the ishentians as their allies, at least until the ashar finally rejoined the UTO. Part of the terms for the ashar to rejoin was for the UTO to form an alliance with the asishi. The tordenchi regularly updated the UTO on the asishi, granting a better understanding of the species over the centuries, so with their better understanding of the species developed over time, the UTO deemed it an acceptable term.

This paved the way for the asishi to become a fully fledged member species with their request to join the Union accepted within eight years. Despite the assumptions that the asishi would be the most difficult species to integrate into the Union, things went surprisingly smoothly since asishi are bizarrely far more aggressive with their own kind rather than aliens.